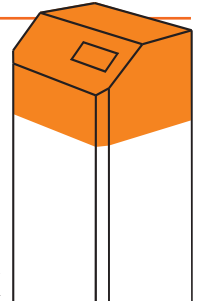


SETTING THE SCENE

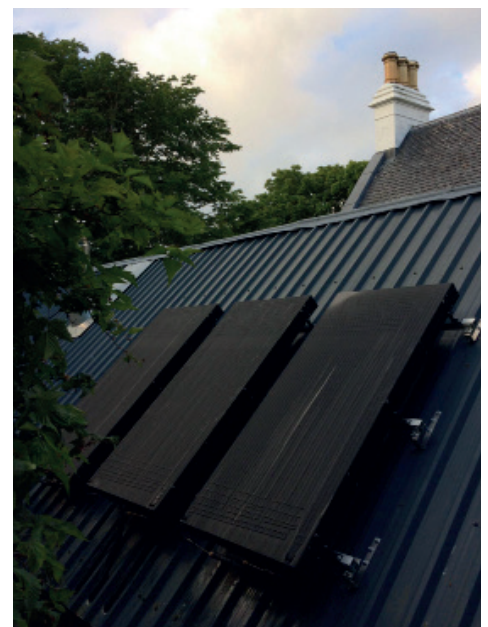
COMMERCIAL demand for our range of thermodynamic Solar Assisted Heat Pumps is growing daily with our latest installation up in the Scottish Isles, this 10 bed hotel was looking for a solution to ensure hot water was

available as and when their guests needed it. After an on-site survey, looking into demand and when the water is used, saw the hotel have 3 BMTBs installed the installation team spent 4 days to install the system, that included the 5 BMTBs

housed within the hotel's plant room with the thermodynamic evaporator panels located on the roof. This installation is another example of how our growing distribution network is really pushing the range into new and exciting markets.



**BMTB 200x3
Commercial
2017
UK**



Contact the team now to find out more about the benefits of our BMTB range and how it can generate up to 100% of your hot water demands day and night, all year.